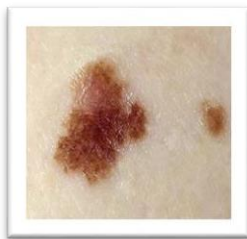


Skin Cancer Screening

The purpose of cancer screening is to find cancer in its earliest stages. The sooner the cancer is found the better the chance for a cure. A cancer screening can also serve to counsel patients on lifestyle modifications that may decrease their risk of cancer. If you or any members of your family have any of the following lesions, please visit your GP who may request further screening if necessary.

SKIN CANCERS

Melanoma



Squamous Cell



**Basal Cell
Carcinoma**



PRECANCEROUS LESIONS

**Actinic
Keratosis**



**Bowen's
Disease**



ATYPICAL MOLES

The 'ABCD RULE'

- *Asymmetrical**
- *Border (Irregular)**
- *Colour (Changes)**
- *Diameter (Change in size)**

